

Quickstartguide ID-Access 1000

(R-EA-WL-ET-HF and OEM-HF-R840-ET)

If you operate several devices in a network using our DLL you have to configure each device not only to a *different IP address*, but also to a *different port number*.

Example

Device #1: IP address: 192.168.178.100 Port number: 8000
Device #2: IP address: 192.168.178.101 Port number: 8001
Device #3: IP address: 192.168.178.102 Port number: 8002
Device #4: IP address: 192.168.178.103 Port number: 8003

You can choose the port numbers freely but, having them in sync with the IP address helps to avoid confusion.

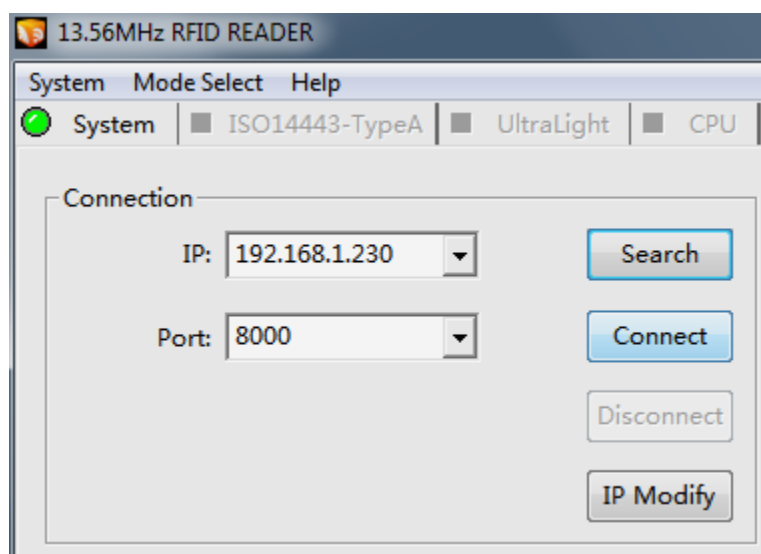
Overview

To operate the device you have to download the SDK on our Website , you can find the links on the backside or on our website <https://www.idtronic-rfid.com> !

The ID Access 1000 is an embedded RFID network module, which can be made up of one network system without stand-alone wire connection by using existing computer networks.

It is available with multiple mode of TCP/IP network and enables reader response immediately and timely when there is any card operation on remote computer and, realizing remote control and build up one system combining local system and different areas.

Powering and Connecting with The Device



Power Supply: 12 Vdc ($\pm 5\%$ regulated)
Power Consumption: < 180 mA.

Factory default IP address range is: 192.168.1.xxx

In case you don't know the IP address of the device, use the [search] function. This will take some time, so please be patient. This will only work in the same subnet, so set your service PC according in the suitable network address range.

If the IP address is known, simply type it in.

Tipp: Use copy & paste to reuse IP addresses from a text file.

When the IP address is shown press [connect]. Now the software should connect to the device and show a

brief version information gathered from the device.

Download SDK and Get Support



<https://tinyurl.com/y6juu72b>



support@idtronic.zendesk.com